



Botala Energy Ltd

BOTALA ENERGY LTD



Botala Energy Overview

✓ Regional exploration has proved coal seams and gas exist increased resource from 23 to 160bcf (2C) after drilling 5 wells

Use of Funds:

- ◇ Commercial gas flow testing programme and additional exploration wells
- ◇ Development of downstream renewables hub and industrial park

Top 5 Shareholders²

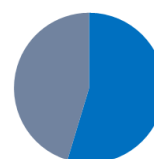
| Shareholder | Shareholding | Ownership |
|---------------------------------------|--------------|-----------|
| Wolf Gerhard Martinick (Chair) | 27.5m | 34.5% |
| Kris Francis Martinick (CEO) | 10.4m | 13.1% |
| Corpserv Pty Ltd (CFO) | 4.9m | 6.1% |
| Martinick Investments Pty Ltd (Chair) | 4.0m | 5.0% |
| JCM1 Pty Ltd | 2.9m | 3.6% |
| Top 20 shareholders | | 70.1m |
| | | 88.0% |
| Board ownership | 48.7m | 61.1% |

Capital structure

| | | |
|--|--------|---------------|
| Current Share Price ¹ | \$0.12 | |
| Shares Outstanding | 4.9m | 79,637,247 |
| Options and Performance Rights on Issue | 4.0m | 24,757,000 |
| Market Capitalisation (undiluted) ¹ | 2.9m | ~\$9.6million |
| Net Cash and PH2 Shares (4 February 2022) | 70.1m | ~\$3.6million |
| Enterprise Value | 48.7m | ~\$6million |

Register Breakdown²

Percentage



■ Board And Management ■ Others



Wolf Martinick

PhD, BSc (Agric). Wolf is an environmental scientist with over 40 years experience addressing



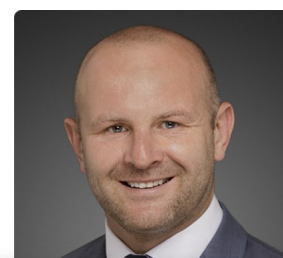
Craig Basson

BCom(Hons); is a Fellow of the Institutes of Chartered Accountants and Governance Australia and has over 20



Peter Grant

BSc (Hons) Geology. Peter is a geologist with over 45 years of experience in up stream oil and gas specialising in,



Kris Martinick

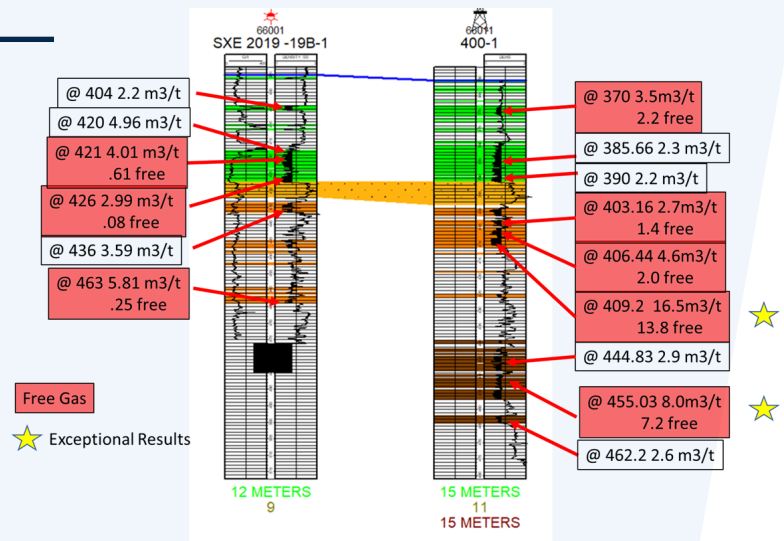
B Chem Eng (Hons); BSc Chem; BCom. Has over 16 years experience in the oil and gas industry in Australasia

Background

Botswana's Government seeks development of its extensive CBM potential of up to 70 TCF to become less dependent on expensive imported diesel and unreliable electricity and to create

Vision

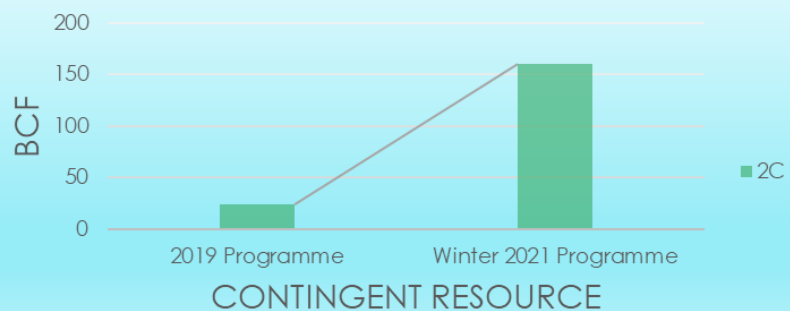
Develop Botswana's CBM opportunities to provide energy certainty for the transition to a sustainable, renewable energy mix, and thereby reduce reliance on coal & diesel and generate employment.



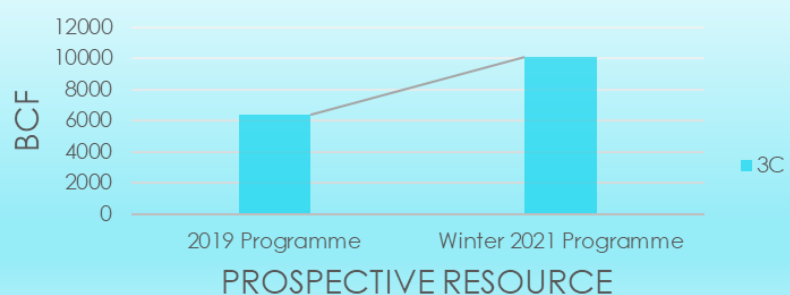
Appraisal of regional data, including 75 drill holes:

- ◇ High-grade area of estimated ~2.4 trillion cubic feet (Tcf) of CBM in Botswana Operated Serowe CBM Project area in excess of 1million acres.
- ◇ Serowe #1 Proof-of-Concept Well - certified prospective resource of ~23.8 (Bcf).
- ◇ 1.Drilled 2 exploration wells at 26 and 48km step outs, both with gas shows:
- ◇ 1.Gross estimated resource increased to 160Bcf and prospective resource to ~10.06 Tcf
- ◇ 1.High gas saturation and excellent gas potential in regionally widespread coal seam.
- ◇ 1.Properties similar to Walloon Formation of Surat Basin, a prolific producing region in Queensland.

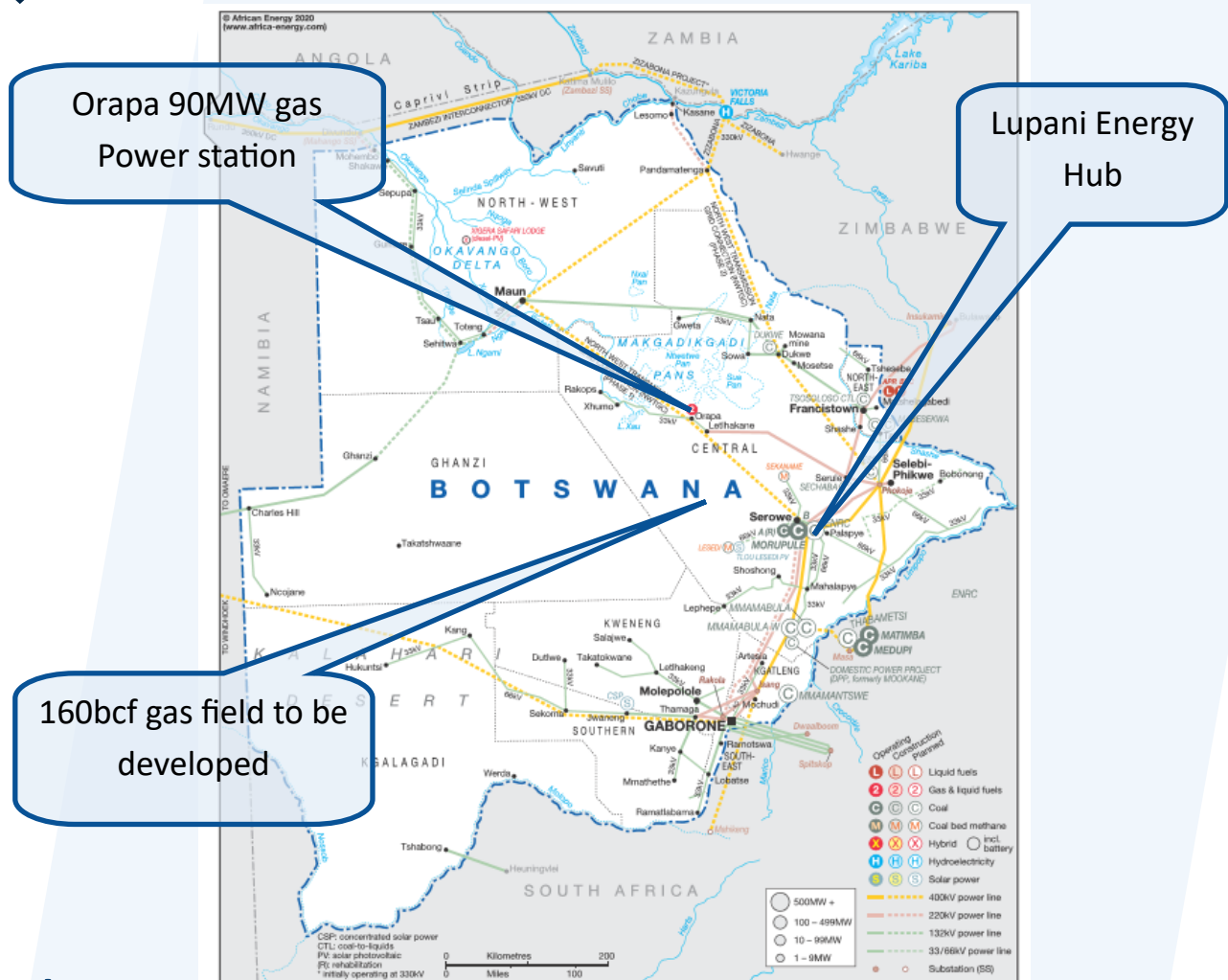
SEROWE PROJECT ESTIMATED GROSS (100%) RESOURCE GAS VOLUME



SEROWE PROJECT ESTIMATED GROSS (100%) PROSPECTIVE RESOURCE GAS VOLUME



Location



Value



Reservoir

- World class reservoir
- 2.4 Tcf certified resource
- Licences secured
- Production forecast Q1 2023



Product

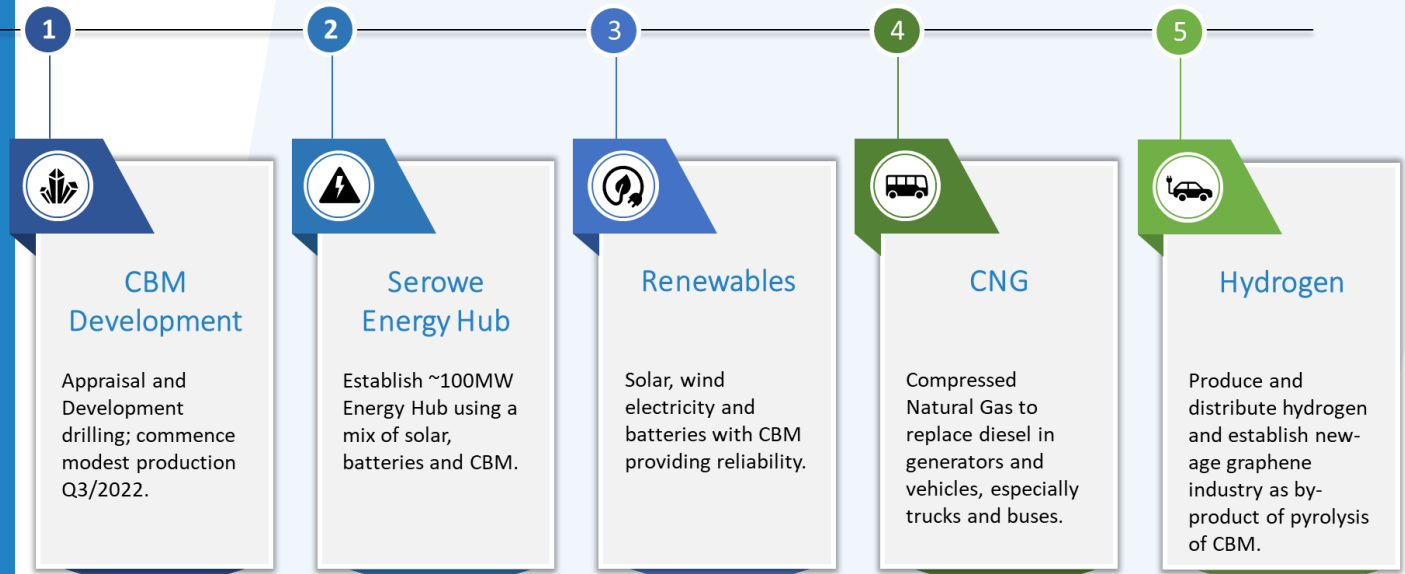
- Natural Gas
- Carbon emission reduced
- Transition to Clean Energy
- Renewable and Hydro-gen energy



Economics

- Low Capex
- High IRR—12% expected
- Market Cap of \$30M
- Multiple customers including mining and governmental

Target Energy Streams



Lupani Energy Hub

Environment, Sustainability and Governance

- Sustainably develop low carbon energy, supporting Botswana, its people and the environment.
- Achieve all 17 UN Sustainable Development Goals (SDG's).
- Enable Botswana to transition from importing high-carbon coal powered energy, to supplying low-carbon natural gas and hydrogen energy.

